



SKM TECHNOLOGY SDN BHD

Company Profile



Content

SKM TECHNOLOGY SDN BHD

	<u>Page</u>
1. Company Structure	3
2. About Us	4
3. Company Policy	5
4. Company Overview	6
5. Quality Policy	7
6. Certifications	8
7. Products Range	9-12
8. Customer Base	13
9. Lead Time	14
10. Contact Us	15
11. Production Capability	16

Company Structure



SKM TECHNOLOGY SDN BHD

- **Representing Worldtong Group (HongKong) Limited for sales in S.E Asia Provide technical and any related services**
- **Prompt and immediate response as and when required**
- **c**



Company Policy

SKM TECHNOLOGY SDN BHD

SKM strive towards full customer satisfaction by Cost, Quality, Services & Delivery while ensuring continual improvement, environment protection and preservation through recycling, minimizing waste and systematic waste management.

SKM ensure full compliance and adherence to statutory laws and regulations on top of ISO certification from accredited body and ensuring the systems and procedures are fully enforced.

SKM ensure operations and cost sustainability to consistently meet customer stringent demand in Cost, Quality, Services & Delivery.





Company Overview

Founded date : 29th Apr 2009

Company : SKM TECHNOLOGY SDN BHD

Paid Up Capital : RM200,000.00

Authorize Capital : RM500,000,00

No. of Employee : 7

Sales Revenue :





Quality Policy

SKM TECHNOLOGY SDN BHD

SKM is committed to ensure customer satisfaction through continual improvement in human resource, technology, equipment and process control.



Certification

- **UL Type: SKM-D1, SKM-M, 94-V0**
- **ISO14001:2015**
- **ISO9001:2015**
- **GB4943.1-2001, GB 8898-2001**
- **ROHS COMPLIANCE**





Products Range

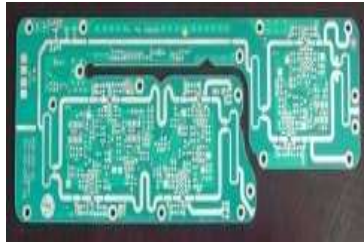
Our products are oriented on the market's needs with competitive cost and ensuring meeting schedule requirement under stringent quality control. The range of products developed by our company :

- 1. Single Layer**
- 2. Double Layer**
- 3. Multi Layer (4 – 48 layers)**
- 4. Quick turn Prototype**
- 5. FPC/ Rigid-Flex**
- 6. MCPCB (Metal Core)**
- 7. Alluminium PCB**

Products Range



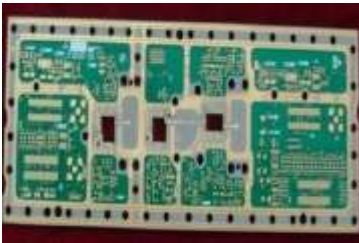
1Layer



2Layer



4Layer



6Layer



6Layer



8Layer



10Layer



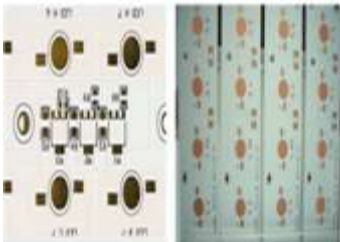
12Layer



4oz



Products Range



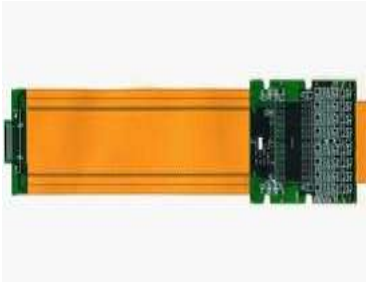
Aluminium Base



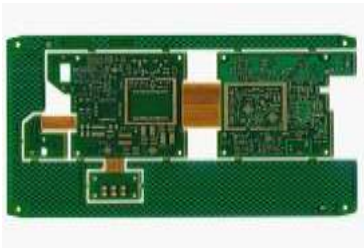
Aluminium Base



Flex-Rigid



Flex-Rigid



Flex-Rigid



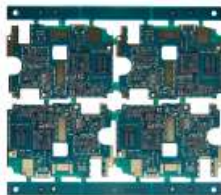
Flex-Rigid



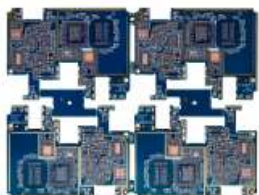
Metal Core PCB



Products Range



Product : 10L Any layer
Special : Copper Filled Vias
Application : Mobile Terminal



Product : 12L 3-4-3 HDI
Special : 50/50µm line / spacing
Application : Mobile Terminal



Product : 2-6-2 HDI
Special : Copper Filled Vias
Application : Mobile Terminal



Product : 2L Substrate
Special : 40/40µm line / spacing
Application : Substrate



Product : 2L Substrate
Special : 50/50µm line / spacing
Application : Substrate



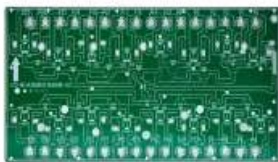
Product : 4L Mini LED
Special : high precision, chromatic control
Application : HD Display Panel



Product : 2L Dash Meter
Special : CoD Mirror like Aluminum
Application : Automotive



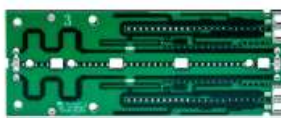
Product : 2L Car Light
Special : High Thermal Conductivity
Application : Automotive



Product : 4L 5G Antenna
Special : High Frequency Hybrid Structure
Application : Telecom



Product : 24L Backplane
Special : High Asepect Ratio, Multi-Lamination
Application : Telecom



Product : 4L Antenna
Special : High Frequency, Imm Tin
Application : Telecom



Product : 14L Thick Copper PCB
Special : Thick Copper, Heat Conductivity
Application : New Energy Production



Product : 6L ECG monitor board
Special : High Reliability
Application : Medical



Product : 6L Doppler Test Machine
Special : High Reliability
Application : Medical



Product : 4L Drone Radar
Special : High Frequency Hybrid Structure
Application : Aerospace



Product : 20L Airplane Engine PCB
Special : 20L, Thick Copper - 4OZ
Application : Aerospace



Customer Base



Malaysia



Singapore



Thailand



Indonesia



India



Lead Time



Classification	Normal Sample Lead Time	Mass Production Lead Time
2 Layer	7 Days	4 weeks
4 Layer	10 Days	6 weeks
6 Layer	12 Days	8 weeks

Contact Us

SKM TECHNOLOGY SDN BHD

Address : No 19-02, Jalan Setia Tropika 1/28,
Taman Setia Tropika,
81200, Johor Bahru, Johor,
Malaysia

Contact Person : Mr. Sky Chew +60 16 7163959

Office : +6012-7805099
: +6012-7825099

Fax : +607-2375099

Email : sky@skm.com.my





Production Capability

Layer account:	Mass production: 2-12 layers
Max board thickness:	Mass production: 5 mm / sample : 7 mm
Material:	FR4 (standard Tg FR4, medium Tg FR4, high Tg FR4, Lead-free solder plate), halogen-free, ceramic, PTFE, PI, BT, PPO, PPE, Mixed, part mixed material et al.
Min Trace/Gap:	inner layer 3mil / 2.5mil (HOZ) , outer layer: 4mil / 3mil(HOZ+Plating)
Max copper thickness:	mass production: 6.0 OZ(UL) / sample: 12 OZ
Min Hole Diameter:	Mechanical drilling 8 mil (0.20mm) / laser drilling 3 mil (0.075mm)
Max size:	1230mm X 560mm
Max Aspect ratio:	12 : 1
Min PAD:	0.25mm(10mil)
Impedance tolerance:	+/-8%
Shape machining accuracy:	+/- 0.10mm(4mil)
Surface treatment:	HASL, ENIG, OSP/ Au Plating (soft/hard)/ Immersion Ag/ Immersion Tin/ Bright Tin Plating/Ag Plating/ Carbon Ink, ENIG + OSP, gold finger
Special processing:	Buried Hole, Blind Hole, Embedded Resistance, Embedded Capacity, Hybrid, Partial hybrid, Partial high density, Back drilling, and Resistance control.





Worldtong Group (HongKong) Limited
世通集团（香港）有限公司

深圳市世亚电子科技有限公司

梅州世亚电子有限公司



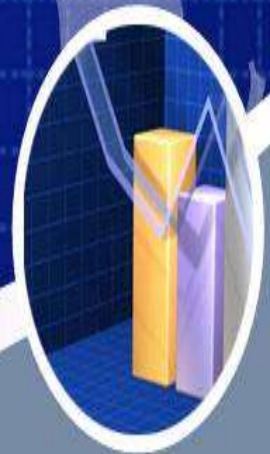
SKM TECHNOLOGY SDN BHD

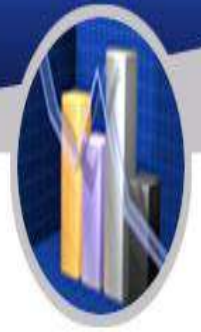
Best
Service
优质服务

Best Lead
Time
快速交期

Best
Quality
高品质

Best
Price
高性价比





Worldtong Group (HongKong) Limited
Meizhou Worldtong PCB Co., Ltd
Shenzhen Worldtong PCB Co., Ltd

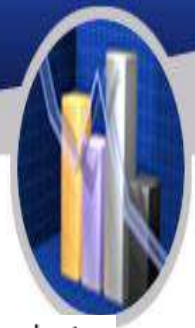
Worldtong Group is a high-tech enterprise which produce all kinds of high precision double-sided, multi-layer and special material boards. Shenzhen Worldtong PBC Co., Ltd was founded in March 2005, Meizhou Worldtong PCB CO., Ltd was establishe in year 2007. We also have our overseas partner SKM TECHNOLOGY SDN BHD (Base in Malaysia) who commit to developments in overseas markets, mainly in import and export trade.

The company has 2000m2 factory, more than 250 employees, and 45000cm2 monthly production capacity. Our products are widely used in high-tech areas such as communication, network, computer, audio visual, industrial products, household appliances and military products. We are constantly studying new technology and putting in advance equipment in order to meet the social demand for high precision circuit board. We formulates a set of effective measures on the process control, and obtained multiple certification such as UL, ISO9001, ISO14001, CQC .

Company embodied a vibrant, focused and dedicated, experienced technical production management team and advanced PCB production and testing equipment. The company established normative quality guarantee and service operation system to provide customers with stable quality and efficient service. |

In addition, the company also owns a number of independent research and development of core technology is used to improve product qualified rate, reduce the production cost, rich product variety. Because of this the company's comprehensive is improved.

Over the years, the company is continuously increasing investment in research and development and technological innovation, establishing and perfecting the technological innovation incentive mechanism under the guidance of technology-leading strategy in order to maintain the leading R&D level and prospective development direction. The company gradually improve the level of product production process, make the company's product quality can get continuous improvement to further strengthen the company's competitive advantage.



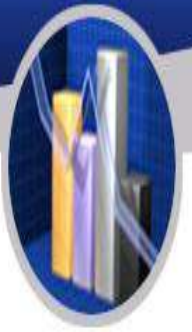
At the same time, the company combined with external introduction and independent research and development for the principle, through the introduction of external technical force to promote the internal product performance and structure optimization. The company pay attention to expand exchange with the research institutions of intra-industry which carry out technical cooperation and innovation in product performance and product structure optimization so that transfer of technological achievements.

After many years of accumulation, the company had a group of stable famous enterprise customers which lay a good market foundation for the future development of the company, and turned into one of the leaders in domestic PCB industry.

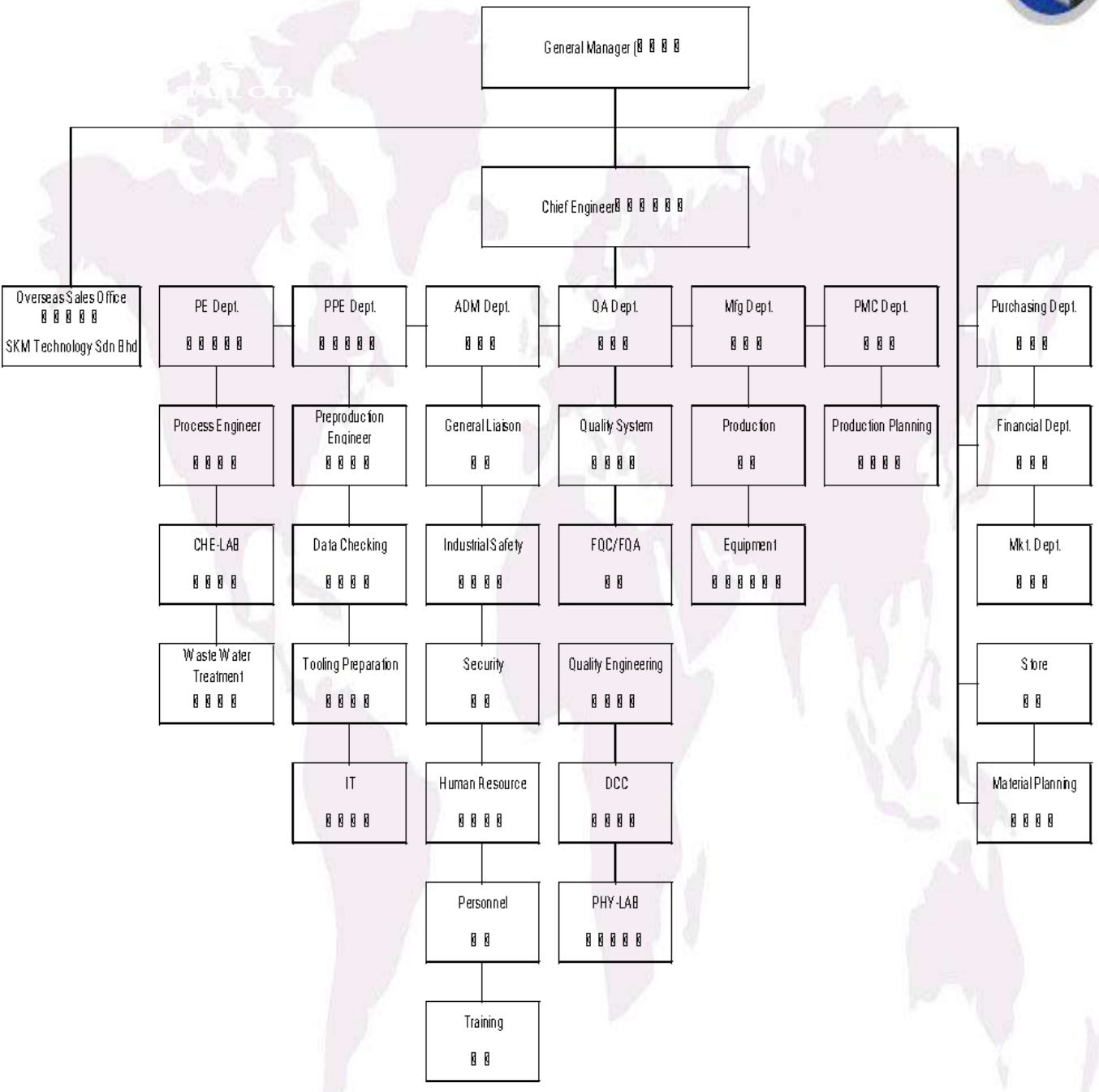
In order to comply with industry trends and improve competitiveness, the company continuously strengthen process improvement, introduce and absorb advance international technology, consolidate and expand the customer base, and attaches great importance to improve production efficiency, In recent years, gross margin and net profit margin of the company continuously keeping rising trend.

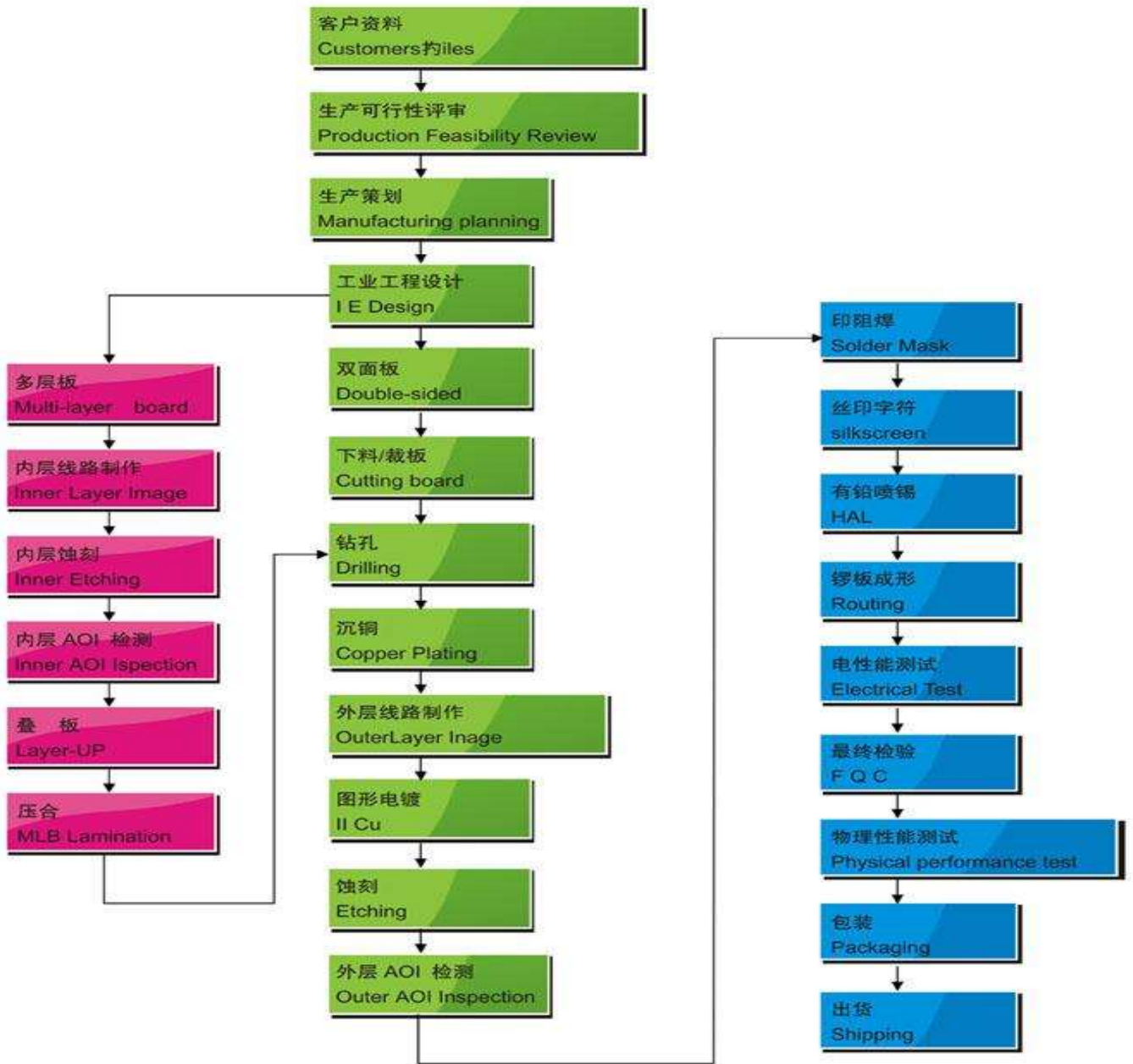
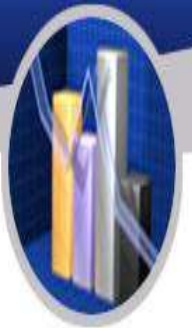
In order to comply with the trend of market development and improve enterprise productivity, the company plans to increase capacity of multilayer printed circuit board and HDI printed circuit board which are high-end value-added products through equity investment projects. Based on above, the company and continue to upgrade technology and capacity of multilayer board, maintain stable rate of return and leading technology level. These will become the company's new profit growth point.

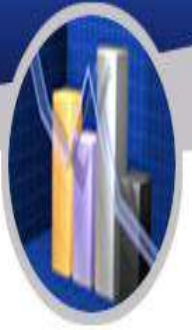


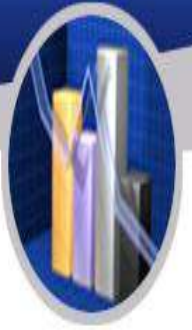


SKM On

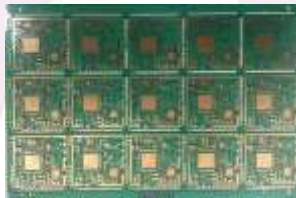








三星客户四面高频头
4 Layers tuner



四层WIFI模块
4 Layers wifi module



四层光模块, osp+金手指
4 Layers optical module
osp+Gold finger



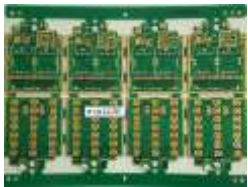
四层BGA锡板
4 Layers HAL board with BGA



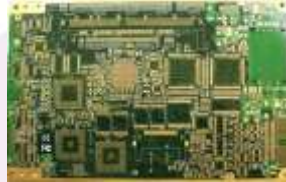
四层金手指卡板, 红油, 金厚30u"
4 Layers Immersion gold (min. Au: 30u")
red solder mask



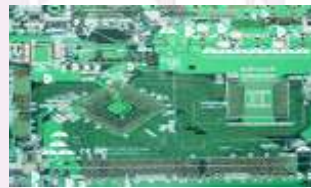
六层蓝油BGA, 半孔沉金, 最小孔0.2mm
6 Layers Immersion gold with BGA
Half an orifice with blue solder
mask, min. hole: 0.2mm



六层沉金+厚金 线宽线距4/4mil
6 Layers ENIG+Selective hard
gold min. line width/space:
4/4mil



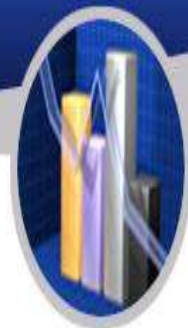
八层沉金阻抗板, 单线阻抗50ohm
8 Layers Immersion Gold
single-end impedance 50ohm



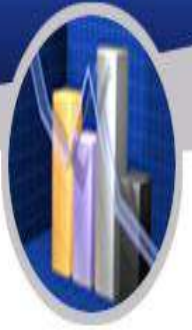
十层沉锡, 双线阻抗, BGA
10 Layers Immersion Tin
differential impedance, BGA,



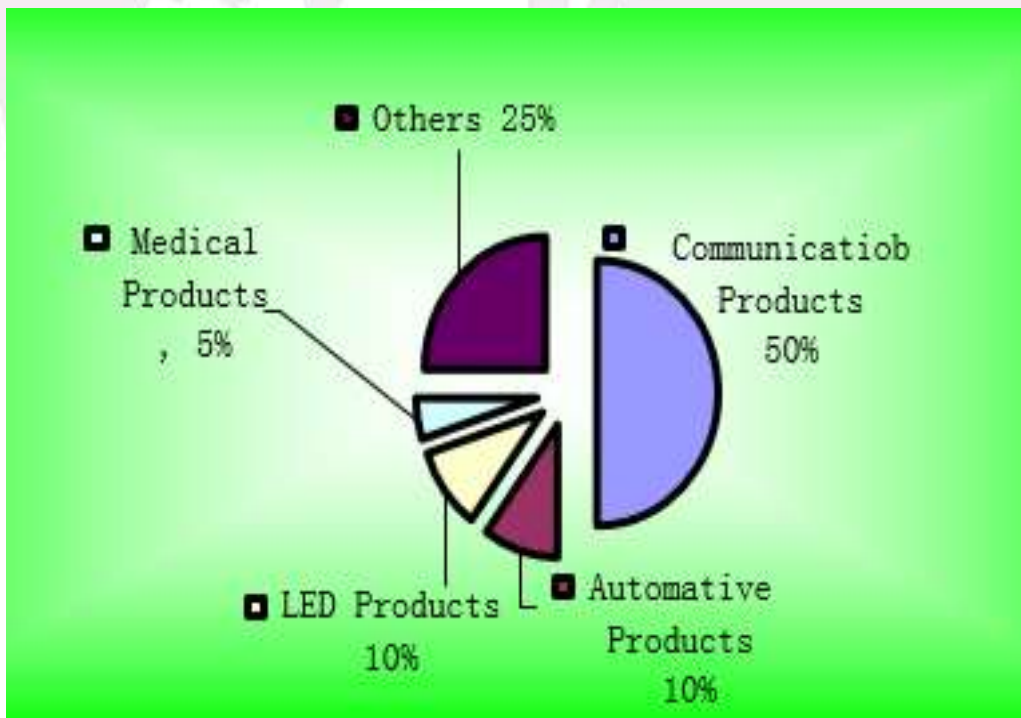
四层触摸屏长条板
4 Layers immersion
Tin
TP PCB

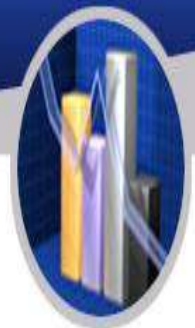


Layer account:	Mass production: 2-12 layers
Max board thickness:	Mass production: 5 mm / sample : 7 mm
Material:	FR4 (standard Tg FR4, medium Tg FR4, high Tg FR4, Lead-free solder plate), halogen-free, ceramic, PTFE, PI, BT, PPO, PPE, Mixed, part mixed material et al.
Min Trace/Gap:	inner layer 3mil / 2.5mil (HOZ) , outer layer: 4mil / 3mil(HOZ+Plating)
Max copper thickness:	mass production: 6.0 OZ(UL) / sample: 12 OZ
Min Hole Diameter:	Mechanical drilling 8 mil (0.20mm) / laser drilling 3 mil (0.075mm)
Max size:	1230mm X 560mm
Max Aspect ratio:	12 : 1
Min PAD:	0.25mm(10mil)
Impedance tolerance:	+/-8%
Shape machining accuracy:	+/- 0.10mm(4mil)
Surface treatment:	HASL, ENIG, OSP/ Au Plating (soft/hard)/ Immersion Ag/ Immersion Tin/ Bright Tin Plating/Ag Plating/ Carbon Ink, ENIG + OSP, gold finger
Special processing:	Buried Hole, Blind Hole, Embedded Resistance, Embedded Capacity, Hybrid, Partial hybrid, Partial high density, Back drilling, and Resistance control.



PRODUCT MIX





Quality Customer Service System

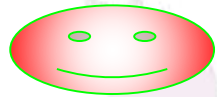
Service Philosophy

Convenient

Integrity

争创一流客户服务

Satisfaction



Eternal

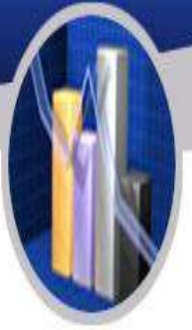
Customer Service Centres

Hong Kong Branch and Overseas Customer Service Centre

Shenzhen Customer Service Centre

Sichuan Customer Service Centre

Beijing Customer Service Centre



1/21/2021

ZPMV2.E488292 - Wiring, Printed - Component | UL Product iQ

UL Product iQ™



ZPMV2.E488292 - Wiring, Printed - Component

Wiring, Printed - Component

[See General Information for Wiring, Printed - Component](#)

SKM TECHNOLOGY SDN. BHD.
 NO.19-02, JALAN SETIA TROPIKA 1/28
 TAMAN SETIA TROPIKA
 KEMPAS
 81200 JOHOR BAHRU, JOHOR MALAYSIA

E488292

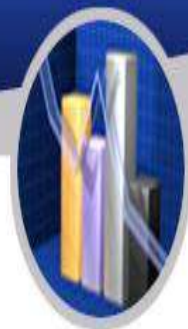
Type	Cond Width		Max				Max		Assembly		Meets		
	Min	Edge	Cond	SS/	Area	Solder	Solder	Oper	Temp	Flame	UL796	T	
	mm(in)	mm(in)	Thk	DS/	Diam	Limits	Process	Temp	Flame	UL796	T		
	mm(in)	mm(in)	mic(mil)	DSO	mm(in)	°C	sec	°C	Cycles	°C	Class	DSR	I
Multilayer printed wiring boards.													
SKM-M	0.10 (0.004)	0.12 (0.005)	17 (0.67) Int:28	DS	20.0 (0.8)	260	10	-	-	130	V-0	All	-
Single layer printed wiring boards.													
SKM-D	0.1 (0.004)	0.1 (0.004)	17 (0.67)	DS	50.8 (2.0)	288	20	-	-	130	V-0	All	3
SKM-D1	0.1 (0.004)	0.13 (0.005)	17 (0.67)	DS	20 (0.8)	288	10	-	-	130	V-0	All	-

Marking: Company name or file number and type designation. May be followed by a suffix to denote factory identification or burning test classification.

Last Updated on 2021-01-11

The appearance of a company's name or product in this database does not in itself assure that products so identified have been manufactured under UL's Follow-Up Service. Only those products bearing the UL Mark should be considered to be Certified and covered under UL's Follow-Up Service. Always look for the Mark on the product.

UL permits the reproduction of the material contained in the Online Certification Directory subject to the following conditions: 1. The Guide Information, Assemblies, Constructions, Designs, Systems, and/or Certifications (files) must be presented in their entirety and in a non-misleading manner, without any manipulation of the data (or drawings). 2. The statement "Reprinted from the Online Certifications Directory with permission from UL" must appear adjacent to the extracted material. In addition, the reprinted material must include a copyright notice in the following format: "© 2021 UL LLC"



Overseas Sales Office

Malaysia office: SKM TECHNOLOGY SDN BHD

Address : No.19-02, Jalan Setia Tropika 1/28,
Taman Setia Tropika,
81200 Johor Bahru, Johor, Malaysia.

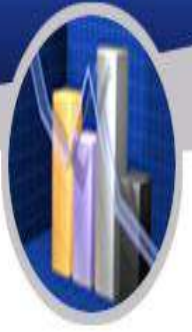
Contact Person : MR SKY CHEW

Email Address : sky@skm.com.my

Mobile No. : +016-7163959

Office No. : +6012 7805099/ +6012 7825099

Fax No. : +607-232 7849



Thank You !

